

# User Manual

## CCT Solar wall lamp with PIR and light sensor

### Features

- PIR sensor automatically turns the light on/glimmer that detect living things when moving.
- Energy saving, low power LED light
- Built-in lithium battery rechargeable by solar power
- Up to 2 days working time after full charged.
- Sunlight sensitive, only works at night or in low light conditions
- Easy installation, no wiring required

Thank you for purchasing PIR Sensor Wall Light. Please read this manual carefully and keep it for usage



### Packing Content

- 1× Solar wall lamp
- 1× Mounting Accessories kit (include 2 screws, 2 Sleeves)

### Function description

- Short press the switch with the below working circle:
  - 1. 6500K- High lighted (100% brightness) at night when people come, glimmer (30% brightness) after people leave for 15s.
  - 2. 4000K- High lighted (100% brightness) at night when people come, glimmer (30% brightness) after people leave for 15s.
  - 3. 3000K- High lighted (100% brightness) at night when people come, glimmer (30% brightness) after people leave for 15s.
  - 4. OFF
- Batteries are replaceable. Pay attention to the positive and negative poles of the battery

### Operation Instructions:

#### 1. How to Install the device

Please use the supplied screws to mount the device on Pole or wall anywhere outside you want for lighting

#### 2. Charging via solar panel

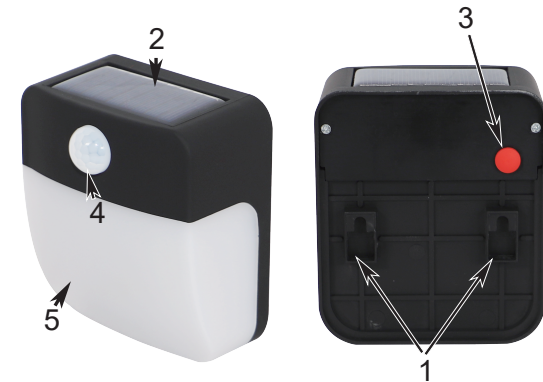
Please install the unit face south and make sure the solar panel get the good sunlight directly without any shelter or glass.

#### 3. PIR Sensor

When people walk within 4-6m, it turns on bright light. If moving people in front of lights, lights always turn on.

The sensor period is 15s

Material	ABS housing +PC cover
Battery	Built-in 1200mAh Lithium Battery
Working time	Up to 2 days when the battery is fully charged
Brightness	Small: 120lm Large: 150lm
Product size	Small: 83*53*93mm Large: 110*54*123mm



## Product Diagram

1. Screw hole; 2. Solar panel; 3. Switch; 4. PIR sensor; 5. PC illumination diffuser

### Caution:

1. This light is solar powered; please install it in place with adequate sunlight.
2. Charging time and speed depend on the amount of direct sunlight
3. No one except professional technicians should attempt to disassemble the product.
4. Any severe shock to the product is not recommended;